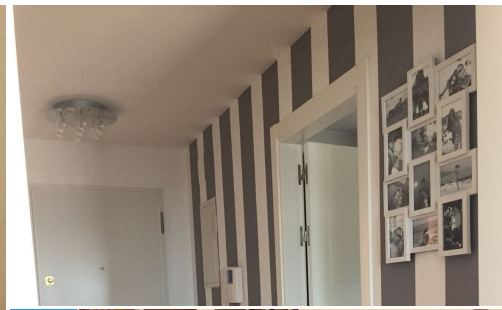


Benalmadena Pueblo, Costa del Sol, Spain

ID#: 218532





Description:

This beautiful corner house is the epitome of comfort, elegance, and breathtaking views. Featuring 3 spacious bedrooms, each with access to its own private terrace, you'll be able to enjoy panoramic views of both the stunning mountains and the serene sea from every room. The large main terrace is perfect for outdoor living, offering ample space for entertaining or simply unwinding while soaking in the scenic beauty around you. With the p...

• **Bedrooms:** 3 | • **Bathrooms:** 3 | • **Built:** 182 m² | • **Orientation:** Southwest | • **View type:** Garden, Mountain, Panoramic, Sea

General: Central Heating, Close To Schools, Close to shops, Close To Town, Condition Excellent, Electricity, Fully equipped kitchen, Garden (Shared), Near transport, Paddle Tennis, Parking covered, Parking underground, Pool Communal, Private terrace, Storage

€795,000

•immomarbel.com •Phone: 34.609.708.906